

Metalline offer a wide range of fire-rated aluminium rainscreen cladding panels and facade systems. Perfect for use on a diverse range of construction projects, our UNITY cladding systems have been fully tested against the required standards for fire and structural performance.

Metalline's UNITY range of aluminum cladding panels have been designed to deliver a non-combustible solution for typical rainscreen applications. From secret-fix hook-on cassettes to flat face-fixed panels, the UNITY range offers architects, specifiers and contractors a fully tested and compliant rainscreen cladding system for both new build and cladding remediation projects.



REACTION TO FIRE PERFORMANCE

Anodised aluminium – A1 classification to BS EN 13501-1
Pre-coated aluminium – A1 classification to BS EN 13501-1
Powder coated aluminium – A2- s1,d0 classification to BS EN 13501-1



SUPERIOR REACTION TO FIRE TESTING OF POWDER COATED PANELS

Powder coated panels tested fixed back to aluminium rails with horizontal and vertical joints, the appropriate ventilation space and a mineral wool substrate. All colours covered by the test's Field of Application



WIDEST SCOPE OF TESTING

Over 25 colours tested to EN1716 ensuring the powder coated range of UNITY panels has the widest field of application on the market



IMPACT RESISTANCE

Soft & hard body impacts fully tested to CWCT TN75/76 Standards



WIND RESISTANCE

Fully tested to CWCT standards for serviceability and safety



DYNAMIC WATER RESISTANCE

Fully tested to CWCT standards

UNITY

Aluminium Rainscreen Cladding



REACTION TO FIRE CLASSIFICATION IN ACCORDANCE WITH BS EN 13501-1

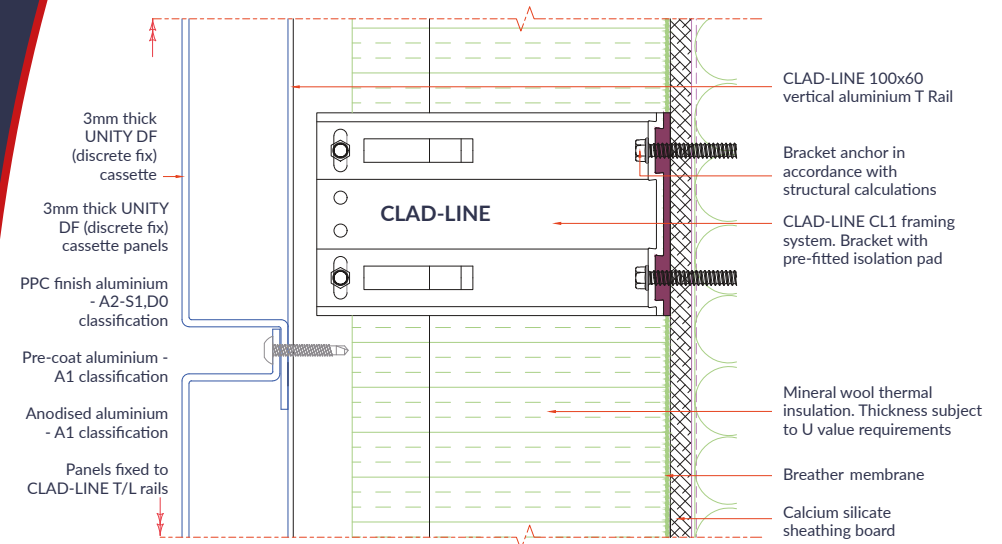
FIELD OF APPLICATION

25 colours were tested to BS EN ISO 1716: 2018 of varying mass/density, composition and organic content in order to ascertain the worst case GHC (Gross Heat of Combustion). BS EN 13823:2020+A1:2022 (SBI) testing conducted on PPC aluminium panels mechanically fixed to aluminium rails with a 15mm to 40mm air gap and a mineral wool substrate. Horizontal and vertical joints were incorporated within the test specimen.

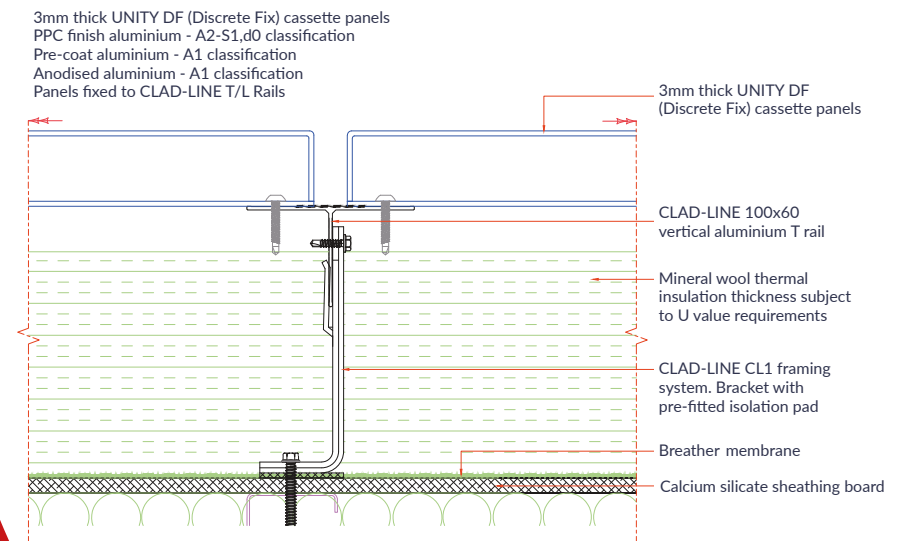
Component	Covered within A2-s1,d0 classification
Thickness of the aluminium	Valid for 3 mm or greater
Thickness of the coating	Valid for 60 - 120 µm
Asymmetry	Valid for fire on either side
Colour	Valid for all colours
Substrate	Mineral wool plus valid for any substrate of class A1 or A2-s1,d0 with a density of at least 37.5 kg/m ³
Airgap / cavities	Valid with airgap/cavities of at least 15 mm between the product and the substrate
Size and positioning of the test specimen	Valid for all product sizes
Joints	Valid for horizontal and vertical joints as tested

TECHNICAL DRAWINGS

UNITY A2 DF HORIZONTAL JOINT



UNITY A2 DF VERTICAL JOINT



UNITY TF

Aluminium Rainscreen Cladding



FINISHES

Anolok™ Anodised

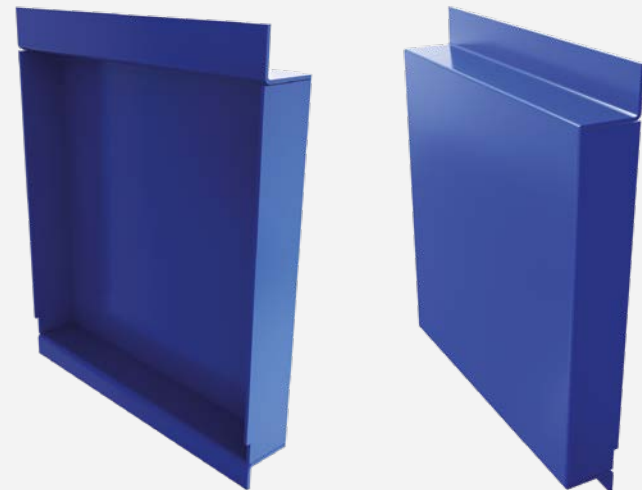
All anodised finishes available with a lifetime finish warranty. Anodised finishes require little if any maintenance.

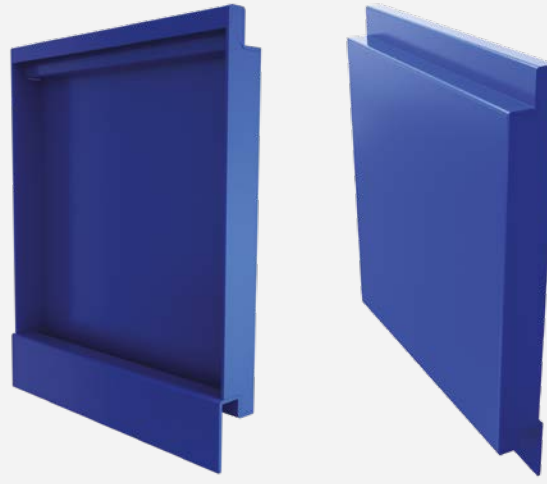
Polyester Powder Coating

Powder coating offers a durable and versatile finish to an aluminium rainscreen panel. Available in all RAL colours plus special finishes including woodgrain, stone and corten effect. Up to 40-year project specific coating warranties are available and maintenance will be required as part of the finish warranty.

UNITY DF

Aluminium Rainscreen Cladding





SPECIALISTS IN RECLADDING PROJECTS

Metalline's extensive testing demonstrates both competence and product compliance, making us the ideal choice for both reclad and new build projects.

There is now a more stringent building regulatory framework required in design and construction for new and high-rise residential buildings, care homes and hospitals. It is imperative, now more than ever, that the Golden Thread of information is complete. With the widest BS EN 13501-1 Field of Application on the market, Metalline have all the information and certification required for a comprehensive and compliant Gateway 2 submission.

Our vast experience within the reclad sector allows us to assist with product selection, optimisation and verification, all backed up with industry leading testing.

