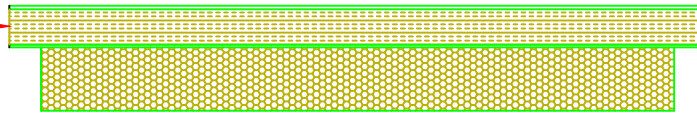


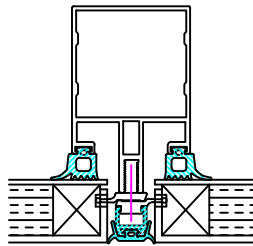
ULTIMA ULT 3

A1 FABROCK CLAD INSULATION

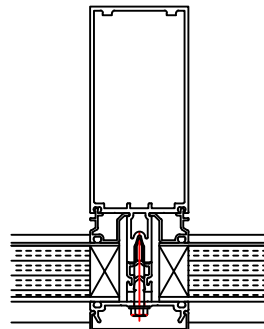


SEE EDGE DESIGN TABLE

ULTIMA - ULT 3 TYPICAL DETAILS



TYPICAL DETAIL FOR PANELS USED WITH
STRUCTURAL GLAZING SYSTEMS



TYPICAL DETAIL FOR PANELS USED WITH
CURTAIN WALLING SYSTEMS

ULTIMA A1

EXTERNAL: ALUMINIUM TRAY WITH ANODISED FINISH

INTERNAL: FOIL FACED ROCKWOOL INSULATION (A1) FITTED TO AN INTERNAL GALVANISED STEEL / ALUMINIUM BALANCER SHEET

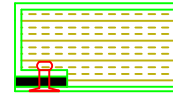
ULTIMA A2 (A2-s1,d0)

EXTERNAL: ALUMINIUM SHEET WITH PPC FINISH

INTERNAL: FOIL FACED ROCKWOOL INSULATION (A1) FITTED TO AN INTERNAL GALVANISED STEEL / ALUMINIUM BALANCER SHEET

EDGE DESIGN TABLE

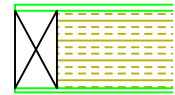
ULTIMA A1 - OUTER TRAY WITH THERMAL BREAK



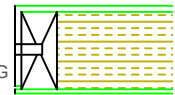
INSULATION CORE



PERIMETER EDGE / THERMAL BREAK



ROUTERED EDGE DETAIL FOR STRUCTURAL GLAZING



Metalline Architectural Fabrications
Hollies Park Road,
Cannock,
Staffordshire,
WS11 1DB
www.metalline.co.uk
Tel: +44 (0) 1543 456930

DO NOT SCALE

1. ANY DOUBT OF THE CONTENTS OF THIS DRAWING PLEASE CONTACT THE DESIGN OFFICE.
2. THIS DRAWING TO BE READ IN CONJUNCTION WITH ALL OTHER CONTRACT DRAWINGS.
3. DO NOT REPRODUCE THIS DRAWING (IN FULL OR PART) WITHOUT THE WRITTEN PERMISSION OF METALLINE (SERVICES) LTD
4. COPYRIGHT METALLINE (SERVICES) LTD 2020

ULTIMA
Aluminium Spandrel Panels

DRAWING TITLE		-	-	-	-	-
ULTIMA ULT 3 TYPICAL DETAILS		-	-	-	-	-
DATE	SCALE	-	-	-	-	-
2/1/24	NTS	-	-	-	-	-
DRAWN	CHECKED	-	-	-	-	-
CB	DB	-	-	-	-	-
DRAWING No.	REVISION	REV	BY	DESCRIPTION	DATE	CHKD
ML-ULT3-001						