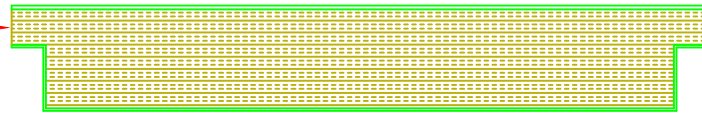


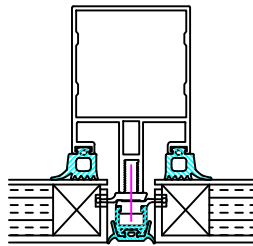
ULTIMA ULT 2

A1 FABROCK CLAD INSULATION

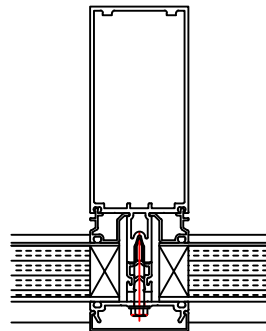


SEE EDGE DESIGN TABLE

ULTIMA - ULT 2 TYPICAL DETAILS



TYPICAL DETAIL FOR PANELS USED WITH
STRUCTURAL GLAZING SYSTEMS



TYPICAL DETAIL FOR PANELS USED WITH
CURTAIN WALLING SYSTEMS

ULTIMA A1

EXTERNAL: ALUMINIUM TRAY WITH ANODISED FINISH

INTERNAL: ALUMINIUM TRAY WITH ANODISED FINISH /
MILL FINISH ALUMINIUM / PRE-GALVANISED STEEL

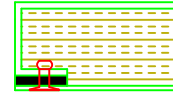
ULTIMA A2 (A2-s1,d0)

EXTERNAL: ALUMINIUM SHEET WITH PPC FINISH

INTERNAL: ALUMINIUM TRAY WITH PPC FINISH /
ANODISED FINISH / MILL FINISH ALUMINIUM /
PRE-GALVANISED STEEL

EDGE DESIGN TABLE

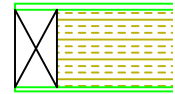
ULTIMA A1 - OUTER
TRAY WITH THERMAL
BREAK



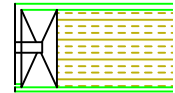
INSULATION CORE



PERIMETER EDGE /
THERMAL BREAK



ROUTERED EDGE
DETAIL FOR
STRUCTURAL GLAZING



Metalline Architectural Fabrications
Hollies Park Road,
Cannock,
Staffordshire,
WS11 1DB
www.metalline.co.uk
Tel: +44 (0) 1543 456930

DO NOT SCALE

1. ANY DOUBT OF THE CONTENTS OF THIS DRAWING PLEASE CONTACT THE DESIGN OFFICE.
2. THIS DRAWING TO BE READ IN CONJUNCTION WITH ALL OTHER CONTRACT DRAWINGS.
3. DO NOT REPRODUCE THIS DRAWING (IN FULL OR PART) WITHOUT THE WRITTEN PERMISSION OF METALLINE (SERVICES) LTD
4. COPYRIGHT METALLINE (SERVICES) LTD 2020

ULTIMA

Aluminium Spandrel Panels

DRAWING TITLE

ULTIMA ULT 2
TYPICAL DETAILS

DATE
2/1/24

SCALE
NTS

DRAWN
CB

CHECKED
DB

DRAWING No.
ML-ULT2-001

REVISION

REV

BY

DESCRIPTION

DATE

CHKD

-	-	-	-	-	-
-	-	-	-	-	-
-	-	-	-	-	-
-	-	-	-	-	-