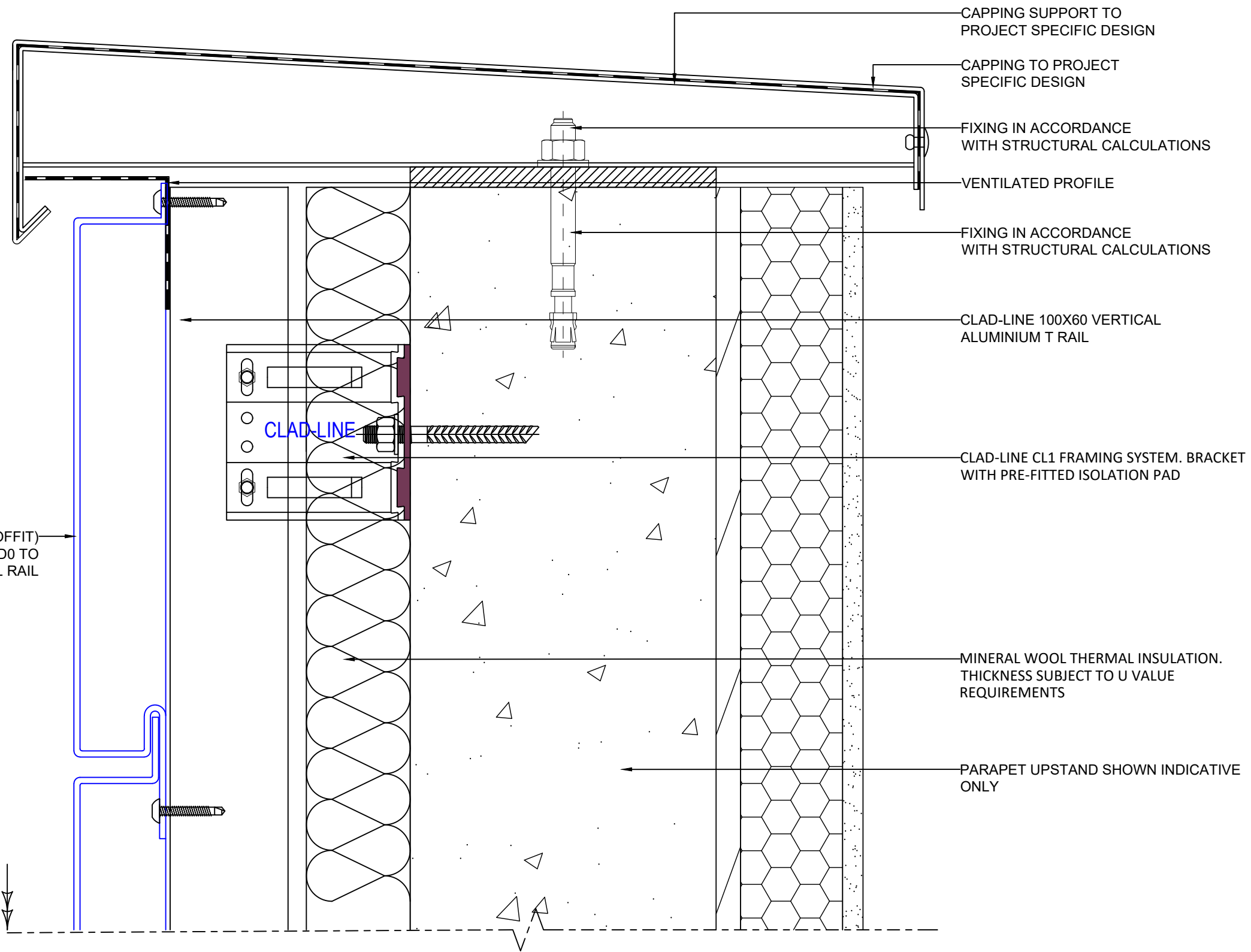


3MM THK UNITY A2 PS (PLANK/SOFFIT) CASSETTE WITH PPC FINISH (A2-S1,D0 TO EN13501-1). FIXED TO CLAD-LINE T/L RAIL



- CAPPING SUPPORT TO PROJECT SPECIFIC DESIGN
- CAPPING TO PROJECT SPECIFIC DESIGN
- FIXING IN ACCORDANCE WITH STRUCTURAL CALCULATIONS
- VENTILATED PROFILE
- FIXING IN ACCORDANCE WITH STRUCTURAL CALCULATIONS
- CLAD-LINE 100X60 VERTICAL ALUMINIUM T RAIL
- CLAD-LINE CL1 FRAMING SYSTEM. BRACKET WITH PRE-FITTED ISOLATION PAD
- MINERAL WOOL THERMAL INSULATION. THICKNESS SUBJECT TO U VALUE REQUIREMENTS
- PARAPET UPSTAND SHOWN INDICATIVE ONLY

CLAD-LINE

DO NOT SCALE

1. ANY DISSIMILAR METALS TO BE ISOLATED WITH BARRIER TAPE.
2. ANY DOUBT OF THE CONTENTS OF THIS DRAWING PLEASE CONTACT THE DESIGN OFFICE.
3. THIS DRAWING TO BE READ IN CONJUNCTION WITH ALL OTHER CONTRACT DRAWINGS.
4. ENSURE THAT ALL STEELWORK AND ANY TIMBERWORK IS CHECKED PRIOR TO THE COMMENCEMENT OF OUR WORKS.
5. UNLESS OTHERWISE STATED, ALL FIXINGS TO BE AT 450mm CENTRES.
6. THIS DRAWING MUST NOT BE COPIED OR REPLICATED WITHOUT WRITTEN PERMISSION FROM METALLINE SERVICES LTD.
7. ALL DIMENSIONS MUST BE CHECKED ON SITE AND ANY DISCREPANCIES REPORTED TO METALLINE SERVICES LTD PRIOR TO COMMENCEMENT OF WORKS



Metalline Architectural Fabrications
 Hollies Park Road,
 Cannock,
 Staffordshire,
 WS11 1DB
www.metalline.co.uk
 Tel: +44 (0) 1543 456930

DRAWING TITLE		-	-	-	-	-
UNITY A2 PS PANEL SYSTEM PARAPET CAPPING INTERFACE		-	-	-	-	-
DATE	SCALE	-	-	-	-	-
23/07/22	NTS	-	-	-	-	-
DRAWN	CHECKED	-	-	-	-	-
CB	DB	-	-	-	-	-
DRAWING No.	REVISION	REV	BY	DESCRIPTION	DATE	CHKD
UA2-PSCL-T08	-	-	-	-	-	-