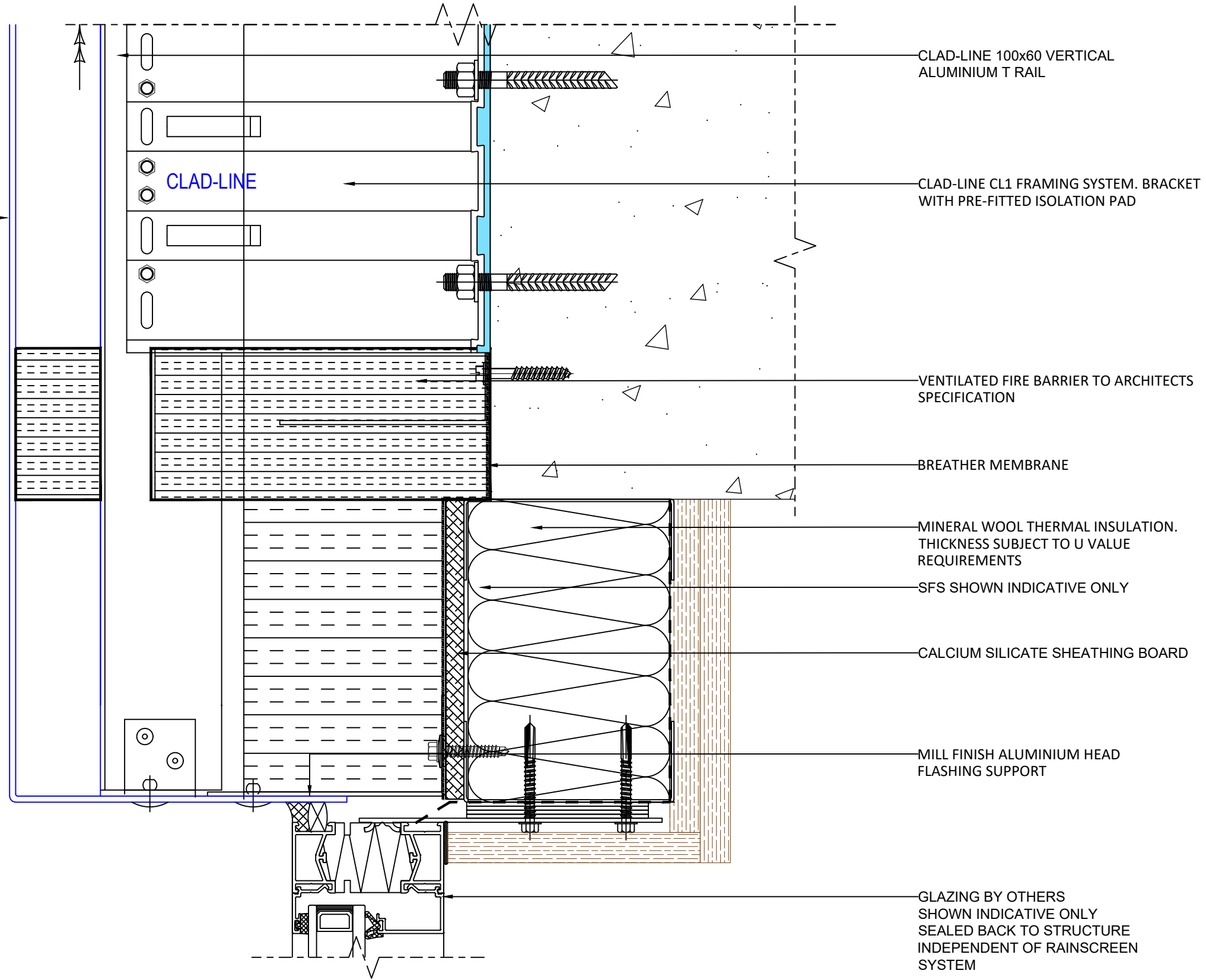


3MM THK UNITY A2 IL (INTERLOCKING) CASSETTE WITH PPC FINISH (A2-S1,D0 TO EN13501-1). FIXED TO CLAD-LINE T/L RAIL



NOTE: VENTILATED FIRE BARRIER TO SPECIALIST DESIGN

Metalline Architectural Fabrications
 Hollies Park Road,
 Cannock,
 Staffordshire,
 WS11 1DB
www.metalline.co.uk
 Tel: +44 (0) 1543 456930

DO NOT SCALE

1. ANY DISSIMILAR METALS TO BE ISOLATED WITH BARRIER TAPE.
2. ANY DOUBT OF THE CONTENTS OF THIS DRAWING PLEASE CONTACT THE DESIGN OFFICE.
3. THIS DRAWING TO BE READ IN CONJUNCTION WITH ALL OTHER CONTRACT DRAWINGS.
4. ENSURE THAT ALL STEELWORK AND ANY TIMBERWORK IS CHECKED PRIOR TO THE COMMENCEMENT OF OUR WORKS.
5. UNLESS OTHERWISE STATED, ALL FIXINGS TO BE AT 450mm CENTRES.
6. THIS DRAWING MUST NOT BE COPIED OR REPLICATED WITHOUT WRITTEN PERMISSION FROM METALLINE SERVICES LTD.
7. ALL DIMENSIONS MUST BE CHECKED ON SITE AND ANY DISCREPANCIES REPORTED TO METALLINE SERVICES LTD PRIOR TO COMMENCEMENT OF WORKS



DRAWING TITLE		-	-	-	-	-
UNITY A2 IL PANEL SYSTEM GLAZING HEAD INTERFACE		-	-	-	-	-
DATE	SCALE	-	-	-	-	-
23/07/22	NTS	-	-	-	-	-
DRAWN	CHECKED	-	-	-	-	-
CB	DB	-	-	-	-	-
DRAWING No.	REVISION	REV	BY	DESCRIPTION	DATE	CHKD
UA2-ILCL-T07	-	-	-	-	-	-