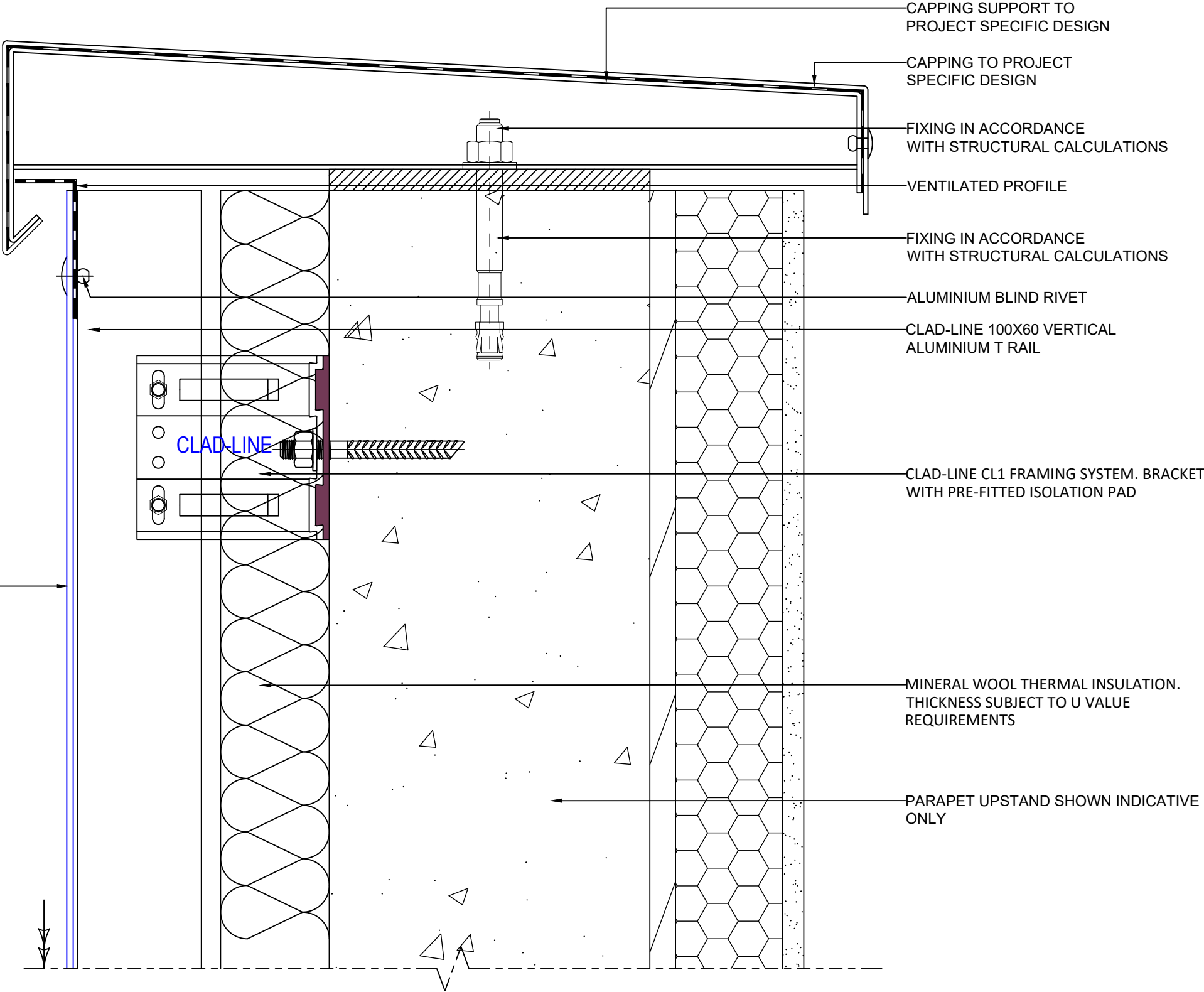


- NOTES:
- SYSTEM TESTED TO BS 8414-2:2020
 - BR135 (2013) COMPLIANT
 - APPROPRIATE VERTICAL AND HORIZONTAL FIRE BARRIERS SHOULD BE USED. PLEASE CONTACT FOR MORE DETAILS
 - PANEL TESTED TO EN 13501-1 AND ACHIEVES AN A1 CLASSIFICATION



Metalline Architectural Fabrications
Hollies Park Road,
Cannock,
Staffordshire,
WS11 1DB
www.metalline.co.uk
Tel: +44 (0) 1543 456930

DO NOT SCALE

1. ANY DISSIMILAR METALS TO BE ISOLATED WITH BARRIER TAPE.
2. ANY DOUBT OF THE CONTENTS OF THIS DRAWING PLEASE CONTACT THE DESIGN OFFICE.
3. THIS DRAWING TO BE READ IN CONJUNCTION WITH ALL OTHER CONTRACT DRAWINGS.
4. ENSURE THAT ALL STEELWORK AND ANY TIMBERWORK IS CHECKED PRIOR TO THE COMMENCEMENT OF OUR WORKS.
5. UNLESS OTHERWISE STATED, ALL FIXINGS TO BE AT 450mm CENTRES.
6. THIS DRAWING MUST NOT BE COPIED OR REPLICATED WITHOUT WRITTEN PERMISSION FROM METALLINE SERVICES LTD.
7. ALL DIMENSIONS MUST BE CHECKED ON SITE AND ANY DISCREPANCIES REPORTED TO METALLINE SERVICES LTD PRIOR TO COMMENCEMENT OF WORKS



DRAWING TITLE		-	-	-	-	-
UNITY A1 TF PANEL SYSTEM PARAPET CAPPING INTERFACE		-	-	-	-	-
DATE	16/07/22	SCALE	NTS	-	-	-
DRAWN	CB	CHECKED	DB	-	-	-
DRAWING No.	UA1-TFCL-T08	REVISION	-	REV	BY	DESCRIPTION
				DATE	CHKD	