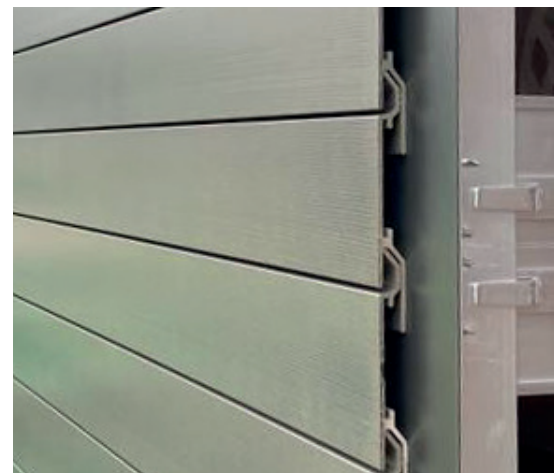
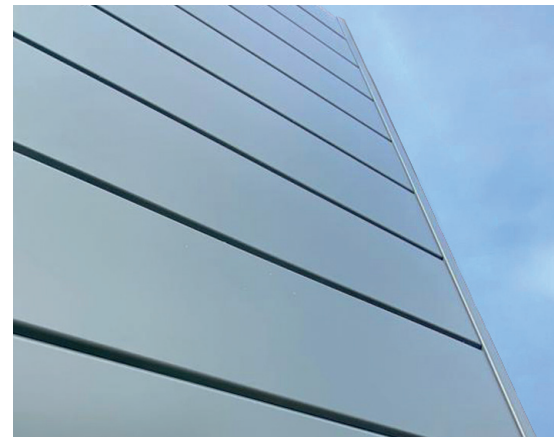
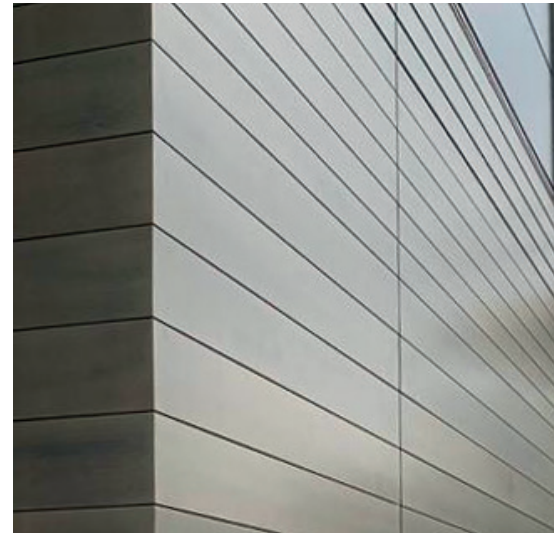


UNITY **X-TRU**  
Extruded Plank System

*Technical Data Sheet*



[www.metalline.co.uk](http://www.metalline.co.uk)  
+44 (0)1543 456 930  
[sales@metalline.co.uk](mailto:sales@metalline.co.uk)



**METALLINE**<sup>®</sup>  
ARCHITECTURAL FABRICATIONS

# Unity A2 X-TRU (Extruded Plank) Aluminium Rainscreen

An A2-rated aluminium extruded plank system carried by aluminium support structure.

## General

<b>Shape</b>	Rectangle Plank
<b>Finish</b>	Polyester Powder coated
<b>Material</b>	Aluminium 6063 T6
<b>CAWS</b>	H92/120 Rainscreen cladding
<b>Fire classification (EN 13501-1)</b>	Class A2
<b>Recyclability</b>	100%
<b>Recycled content</b>	50%

## Dimensions

PART	WIDTH	LENGTH	THICKNESS
100mm Module	186mm Overall (Face 90mm)	3000/6000mm	2.5mm
150mm Module	136mm Overall (Face 140mm)	3000/6000mm	2.5mm
Starter Clip	56mm	3000/6000mm	2.5mm
End Clip	48mm	3000/6000mm	2.5mm

Custom sizes are available - Please speak to the Metalline Team

## Weight

PART	WEIGHT (KG/M)
100mm Module	1.613kg/m
150mm Module	1.299 kg/m
Starter Clip	0.66 kg/m
End Clip	0.517 kg/m

## Technical Data

PHYSICAL PROPERTY	VALUE
Density	2.70 G/CM <sup>3</sup>
Melting Property	655 °C
Thermal Expansion	23.5 x10 <sup>-6</sup> /K
Modulus of Elasticity	69.5 GPA
Thermal Conductivity	201 W / MK
Electrical Resistivity	0.033 x10 <sup>-6</sup> Ω M
Tensile Strength	215 MIN MPA
Proof Stress	170 MIN MPA
Hardness Brinell	75 HB