

In September 2020, the Society of Façade Engineering (**SFE**) and the Centre for Window and Cladding Technology (**CWCT**) released further guidance with regards to the existing 2018 Building Regulations. Many queries were raised in relation to the materials used to construct external walls as well as façades since the ban on the use of combustible materials was introduced in November 2018.

Section 6.2 of this document refers directly to “spandrel/infill panels”.

Section 6.2.1 states:

6.2.1 Perimeter edge seal

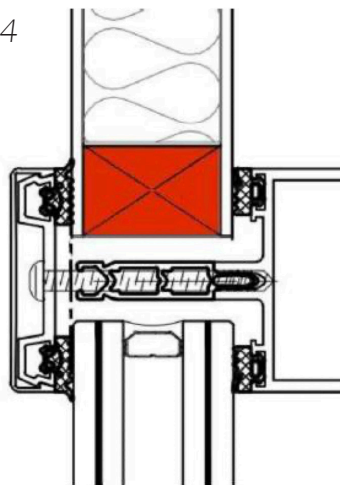
A key component of a spandrel/infill panel is the perimeter edge detail. This is a component which performs multiple functions, all of which are vital to the overall performance of the panel. Not only does it provide a weather-seal, but it is also a thermal break and a key structural component of the panel. Typically, a material such as PVC is used.

A non-compressible spacer is required in order to be able to adequately clamp the panel into the curtain wall/windows frame. The edge of the panel must also be sealed; the edge of the panel is in the drainage zone of the frame and as such may be subject to periodic wetting. Tapes are often used to create this seal.

The spacer material is often selected so as to reduce heat loss and condensation risk at the panel edge, and so it is considered as a thermal break and is therefore exempt from the requirements of regulation 7(2). This applies to spacers used ‘normally’, i.e. a spacer of minimum size, limited to the very edge of the panel, as illustrated in Figure 4 below.

Where the edge spacer must be sealed to prevent moisture entering the panel (e.g. to prevent deterioration or reduction of thermal performance of the products/material within the panel) then the seal might be considered exempt from the requirements of Regulation 7(2).

Figure 4



Source: Technical guidance for interpretation in relation to the external walls and specified attachments of Relevant Buildings in England.

CWCT/SFE September 2020

For further guidance please contact Metalline
Metalline (Services) Limited
Hollies Park Road, Cannock, Staffordshire, WS11 1DB
www.metalline.co.uk | +44 (0)1543 456 930 | sales@metalline.co.uk