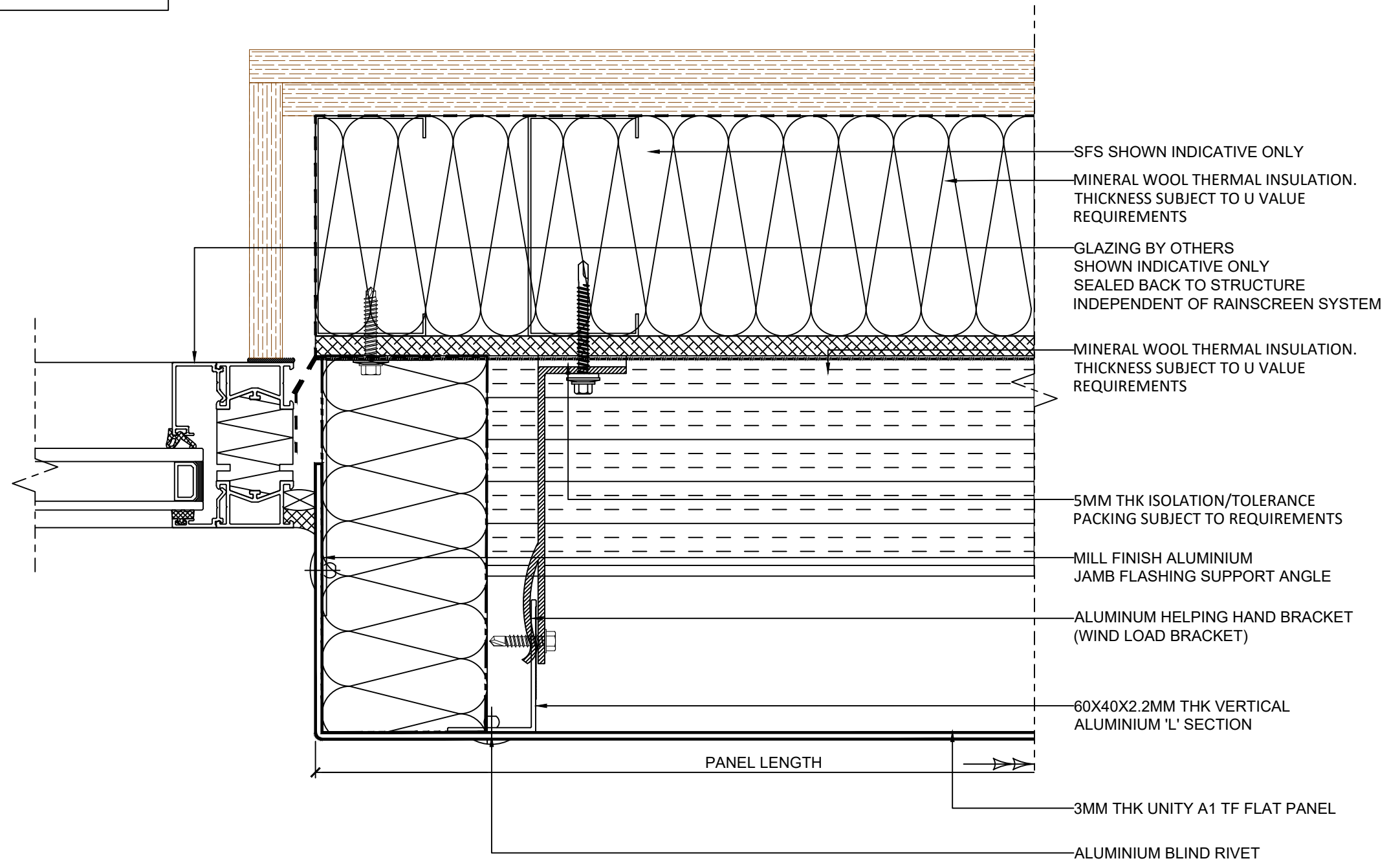


**NOTES:**

- SYSTEM TESTED TO BS 8414-2:2020
- BR135 (2013) COMPLIANT
- APPROPRIATE VERTICAL AND HORIZONTAL FIRE BARRIERS SHOULD BE USED. PLEASE CONTACT FOR MORE DETAILS
- PANEL TESTED TO EN 13501-1 AND ACHIEVES AN A1 CLASSIFICATION



Metalline Architectural Fabrications  
 Hollies Park Road,  
 Cannock,  
 Staffordshire,  
 WS11 1DB  
[www.metalline.co.uk](http://www.metalline.co.uk)  
 Tel: +44 (0) 1543 456930

**DO NOT SCALE**

1. ANY DISSIMILAR METALS TO BE ISOLATED WITH BARRIER TAPE.
2. ANY DOUBT OF THE CONTENTS OF THIS DRAWING PLEASE CONTACT THE DESIGN OFFICE.
3. THIS DRAWING TO BE READ IN CONJUNCTION WITH ALL OTHER CONTRACT DRAWINGS.
4. ENSURE THAT ALL STEELWORK AND ANY TIMBERWORK IS CHECKED PRIOR TO THE COMMENCEMENT OF OUR WORKS.
5. UNLESS OTHERWISE STATED, ALL FIXINGS TO BE AT 450mm CENTRES.
6. THIS DRAWING MUST NOT BE COPIED OR REPLICATED WITHOUT WRITTEN PERMISSION FROM METALLINE SERVICES LTD.
7. ALL DIMENSIONS MUST BE CHECKED ON SITE AND ANY DISCREPANCIES REPORTED TO METALLINE SERVICES LTD PRIOR TO COMMENCEMENT OF WORKS



DRAWING TITLE		-	-	-	-	-
UNITY A1 TF PANEL SYSTEM GLAZING JAMB INTERFACE		-	-	-	-	-
DATE	SCALE	-	-	-	-	-
12/10/20	1:2 @A3	-	-	-	-	-
DRAWN	CHECKED	-	-	-	-	-
CB	DB	-	-	-	-	-
DRAWING No.	REVISION	REV	BY	DESCRIPTION	DATE	CHKD
UA1-TF-T09	-					