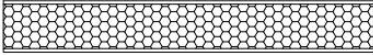
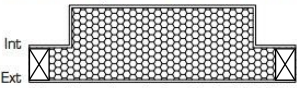
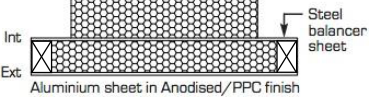
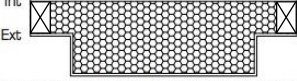
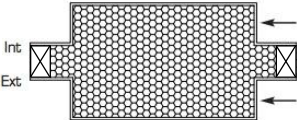



Popular Panel Designs

<p>ULT 1</p>	<p>Internal Face = 2mm Aluminium PPC finish</p>  <p>External Face = 3mm Aluminium Anodised finish</p>
<p>ULT 2</p>	<p>Aluminium tray with welded & dressed corners</p>  <p>Int Ext</p> <p>Aluminium sheet in Anodised/PPC finish</p>
<p>ULT 3</p>	<p>Foil faced insulation</p>  <p>Int Ext</p> <p>Aluminium sheet in Anodised/PPC finish</p> <p>Steel balancer sheet</p>
<p>ULT 4</p>	<p>Mill finish Aluminium balancer sheet</p>  <p>Int Ext</p> <p>Aluminium tray with welded & dressed corners in Anodised/PPC finish</p>
<p>ULT 5</p>	 <p>Int Ext</p> <p>Aluminium tray with welded & dressed corners in Anodised/PPC finish</p>

Popular Edge Designs

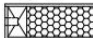
Edge Type A

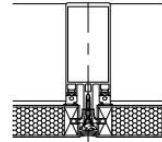
Insulation core 

Edge Type B

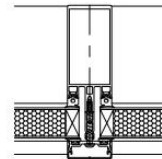
Non combustible hard edge 

Edge Type C

Routed hard edge for structural glazing 



For panels used with structural glazing systems



For panels used with curtain walling systems

Example guide for specification of ULTIMA PANELS by Metalline

Panel Type	ULT 2, Edge Type B
External Facing	3mm Aluminium Blue-Grey Anodised
Core Insulation	A1 Non Combustible Insulation
U Value required	0.25 W/m ² K
Internal Facing	2mm Aluminium PPC RAL 9010 Matt
Quantity	500 M ²
Approx sizes	120 No 1200mm x 1500mm 106 No 3350mm x 800mm

A variety of different thicknesses and finishes can be supplied to panel facings