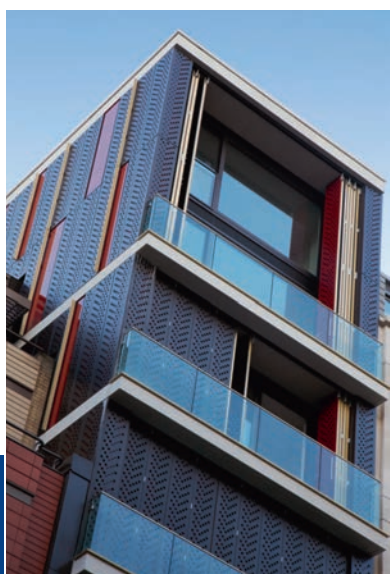


**METALLINE**  
ARCHITECTURAL FABRICATIONS

**PRODUCT BROCHURE**



Feature Beam

Anodised Products

Rainscreen Panels

Fascia Panels & Soffits

Ultima Insulated Panels

Perforated Panels

Cills, Fins & General Pressings

Column Covers & Bullnoses

Secret Fix Copings

Bracketry





With over 25 years experience and a growing reputation nationwide, Metalline has successfully developed into one of the leading fabricators of specialist Architectural Metalwork in the UK.

The company, led by its directors, has built a reputation throughout the architectural industry for outstanding quality and service. Metalline has a dedicated and established workforce who are renowned for the quality of their work.

At Metalline we pride ourselves on our ability to react to even the most detailed of client requirements. No job is ever too big or too small and our highly skilled workforce has a reputation for delivering fastrack solutions on time and to exact specification.

Many prestigious projects have been completed throughout the United Kingdom, a selection of which appear in this brochure.





# FEATURE BEAM

Feature Beam is a highly adaptable metal pressing which will enhance the appearance of any building façade.

Metalline's continuous investment into innovative manufacturing processes has led to the development of a new architectural feature. Feature Beam can be used in conjunction with most curtain walling and cladding systems to provide a unique exterior finish to any building.

Feature Beam is an Aluminium or Stainless Steel Pressing which is available in a variety of metallic or plain colours. These include polyester powder coated, anodised or polished.

Various details can be incorporated to meet client specifications, including mitred and welded corners, to provide visually sharp lines. Where horizontal and vertical runs meet, complex cruciforms can also be created which add further aesthetic appeal to a building.

Feature Beam, unlike conventional structural steel beams, is not restricted by size, weight or excessive cost. It is simple to install, will not rust and is virtually maintenance free. Designed to complement most curtain walling systems, it provides a unique visual relief between larger glazed areas.

“ Feature Beam, unlike conventional structural steel beams, is not restricted by size, weight or excessive cost. ”

## Product Specification

- Manufactured in 2mm and 3mm thicknesses.
- Designed to suit virtually any specification.
- Manufactured from high grade aluminium.
- Available in a variety of finishes and colours.
- Available in lengths up to 6000mm.
- Design options now available in stainless steel.

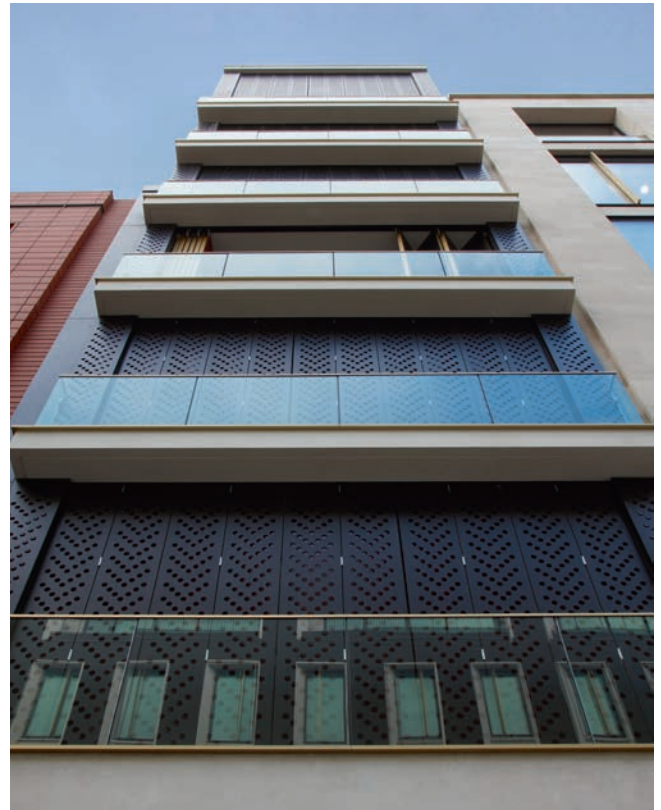


# ANODISED PRODUCTS

Metalline has become the market leader in the supply of high quality anodised aluminium insulated panels, pressings, soffits and rainscreen façades.

A close working relationship with the UK's leading anodisers, United Anodisers, coupled with the use of superior grade J57S aluminium sheet, allows Metalline to offer the prestigious finish to a building's façade that is increasingly demanded by today's discerning designers.

Taking advantage of the latest research and development into anodised finishes has seen Metalline engaged by a number of leading architects and contractors to advise and supply fabricated aluminium with an anodised finish whose colour is guaranteed for the life cycle of a building.



“ Market leader in the supply of high quality anodised aluminium insulated panels ”

Available in a full range of Anolok finishes, specifiers are now able to enhance the aesthetic look and feel of a building's façade in a choice of colours including, Natural Silver, Bronzes from light to dark, Regency Gold 1 & 2, Black and specialist Anolok II Blue-Grey and Stone-Grey finishes.

New products available include the UV stable dye colour range.

Recently completed anodised projects coupled with the latest welding and fabrication techniques has seen Metalline further enhance its reputation in this field.





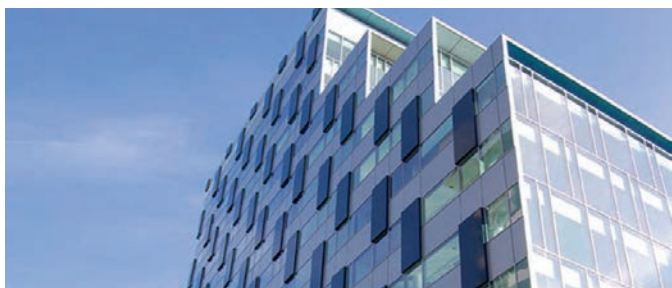
# RAINSCREEN PANELS

---

Metalline offers a wide range of integrated rainscreen panels and façade systems for use on a diverse range of construction projects.

Rainscreen panels offer protection to a building's external façade whilst also enabling designers to enhance the look and feel of both new build and refurbishment projects.

Panels with associated carriers, bracketry and support systems are designed to allow the correct flow of ventilation and drainage run off in line with current building regulations. Rainscreen panels can be supplied in panel lengths up to 6000mm and finished in anodised or polyester powder coated finishes in an extensive range of colours.



“ Rainscreen panels offer protection to a building's external façade whilst enabling designers to enhance the look and feel of both new build and refurbishment projects. ”



# FASCIA PANELS & SOFFITS

---

Metalline has perfected the art of manufacturing a range of fascia panels and soffits that provide both an aesthetic finish and weather proof seal for a range of exterior environments.

Fascias and Soffits are generally fabricated from 3mm aluminium and can be produced to your exact specification with either an anodised finish to the full Anolok range or polyester powder coated in most RAL and metallic colours. Fascia and Soffit panels can also incorporate an insulation core to significantly improve thermal insulation – keeping the building interior warm in winter and cool in summer.



“ Fascias and Soffits are generally fabricated from 3mm aluminium and can be produced to your exact specification ”

# ULTIMA

---

## INSULATED PANELS

**Metalline's Ultima Architectural Panel has been specified on many prestigious façades over the past 25 years.**

It can be adapted to fit a variety of facade details and can also be glazed into a standard curtain walling system or structural glazing system.

The external and internal facing material is more commonly requested in aluminium, with either an anodised finish in Natural Silver, Bronzes from light to dark, Black, Regency Gold 1 & 2 and specialist Anolok II Blue-Grey and Stone-Grey colours.

Alternatively it can be finished in a polyester powder coating in a variety of RAL and metallic colours.

Ultima Panels can also be provided with alternative facings such as perforated aluminium, brushed stainless steel, or patterned copper.



“ The Ultima Panel has been independently tested to BS476 for fire performance at The Warrington Fire Research Centre ”

### Research and Development

Metalline's commitment to R&D has seen it become the first UK fabricator to be able to manufacture 6000mm x 2000mm panels.

### Thermal Performance

Advice on how to meet specific U values to comply with thermal performance requirements can be given by our technical team.

### Fire Performance

A key requirement for many projects is fire resistance. The Ultima Panel has been independently tested to BS476 for fire performance at The Warrington Fire Research Centre, with fire ratings including 30/30 and 60/60. A selection of specific facings and core materials can be incorporated, many of which can be supplied with the required fire retardant properties.

### Environmental Performance

BREEAM is the world's foremost environmental assessment method and has become one of the most widely recognised measures of a building's environmental performance. Metalline supplies a range of A rated insulation materials to suit a variety of specifications.

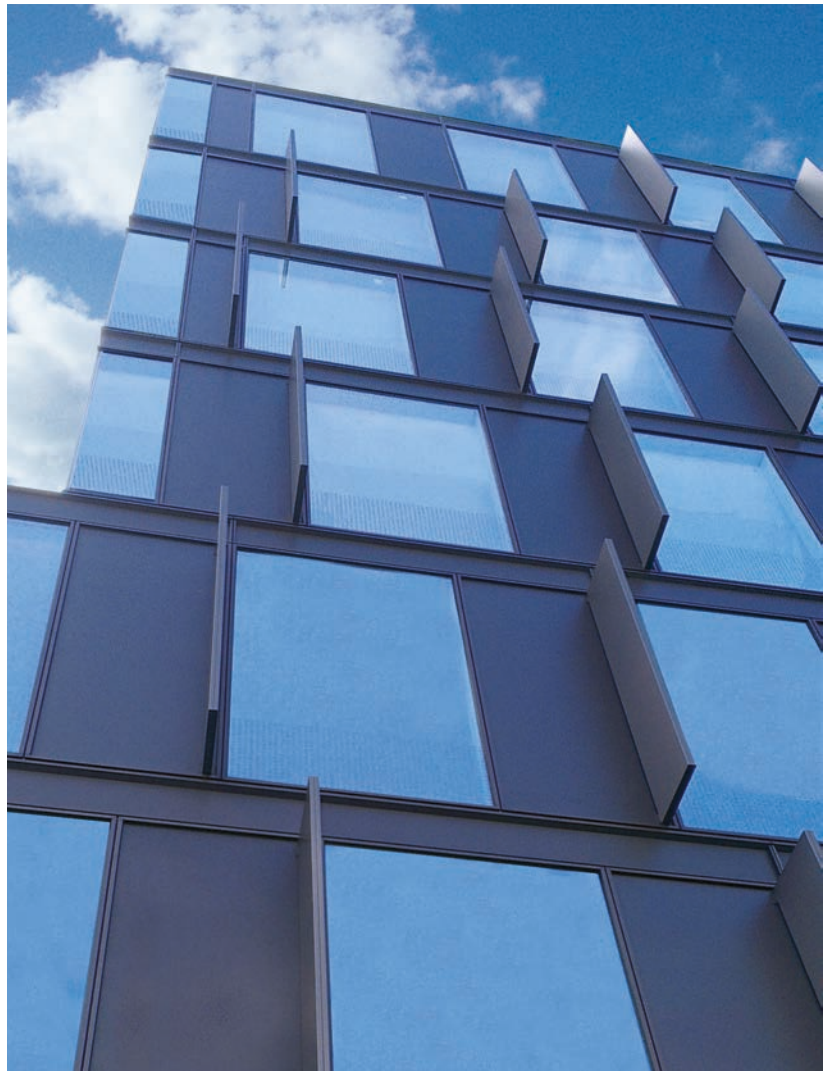
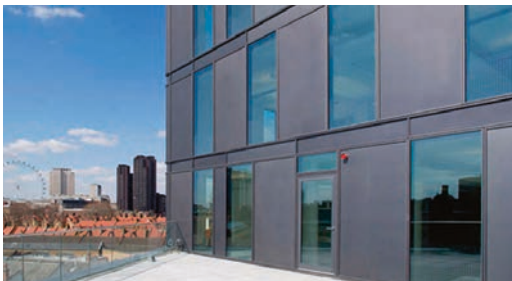
### Acoustic Performance

Ultima panels can be specified to meet specific acoustic performance criteria. Using insulation cores tested by The Sound Research laboratory Metalline can produce panels for most environments. They have been successfully specified on buildings in high noise areas such as airports, city centres and industrial environments.

### Bonding and Structural Performance

Independently tested by Wintech Engineering, all metal facings are pressure bonded to the insulation core using an adhesive which can withstand temperatures -40°C to 140°C.



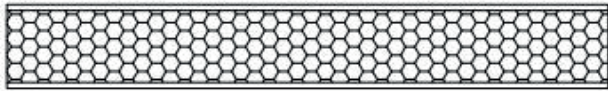
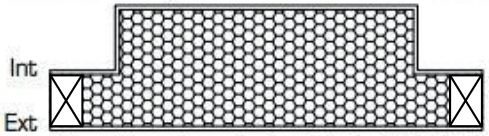
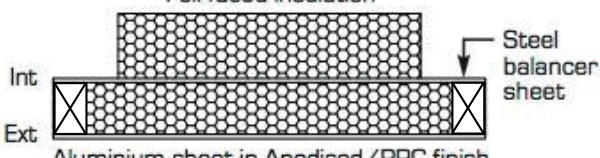
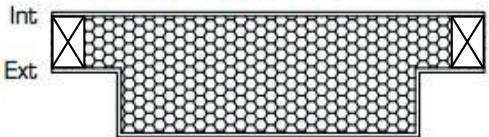
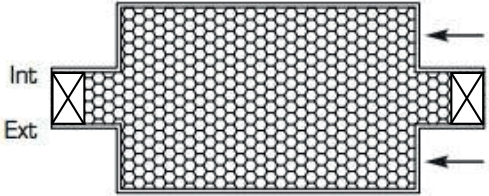




# ULTIMA

## DESIGN SPECIFICATIONS

### Popular Panel Designs

ULT 1	<p>Internal Face = 2mm Aluminium PPC finish</p>  <p>External Face = 3mm Aluminium Anodised finish</p>
ULT 2	<p>Aluminium tray with welded &amp; dressed corners</p>  <p>Aluminium sheet in Anodised/PPC finish</p>
ULT 3	<p>Foil faced insulation</p>  <p>Steel balancer sheet</p> <p>Aluminium sheet in Anodised/PPC finish</p>
ULT 4	<p>Mill finish Aluminium balancer sheet</p>  <p>Aluminium tray with welded &amp; dressed corners in Anodised/PPC finish</p>
ULT 5	 <p>Aluminium tray with welded &amp; dressed corners in Anodised/PPC finish</p> <p>PPC finish</p>

### Popular Edge Designs

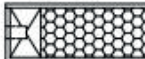
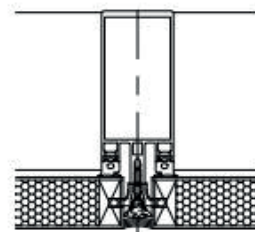
Edge Type A  
Insulation core



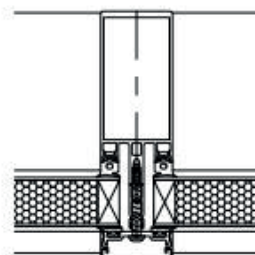
Edge Type B  
Non combustable hard edge



Edge Type C  
Routed hard edge for structural glazing

For panels used with structural glazing systems



For panels used with curtain walling systems

### Example guide for specification of ULTIMA PANELS by Metalline

Panel Type	ULT 2, Edge Type B
External Facing	3mm Aluminium Blue-Grey Anodised
Core Insulation	Styrofoam™ LB-A
U Value required	0.25 W/m <sup>2</sup> K
Internal Facing	2mm Aluminium PPC RAL 9010 Matt
Quantity	500 M <sup>2</sup>
Approx sizes	120 No 1200mm x 1500mm 106 No 3350mm x 800mm

A variety of different thicknesses and finishes can be supplied to panel facings



# PERFORATED PANELS

---

The acquisition of market leading machinery has projected Metalline to the forefront of the industry for producing perforated architectural panels from high grade aluminium sheet.

A variety of punching designs have been developed to meet the ever increasing demands from architects and designers looking for an iconic finish to the exterior façade of their building.

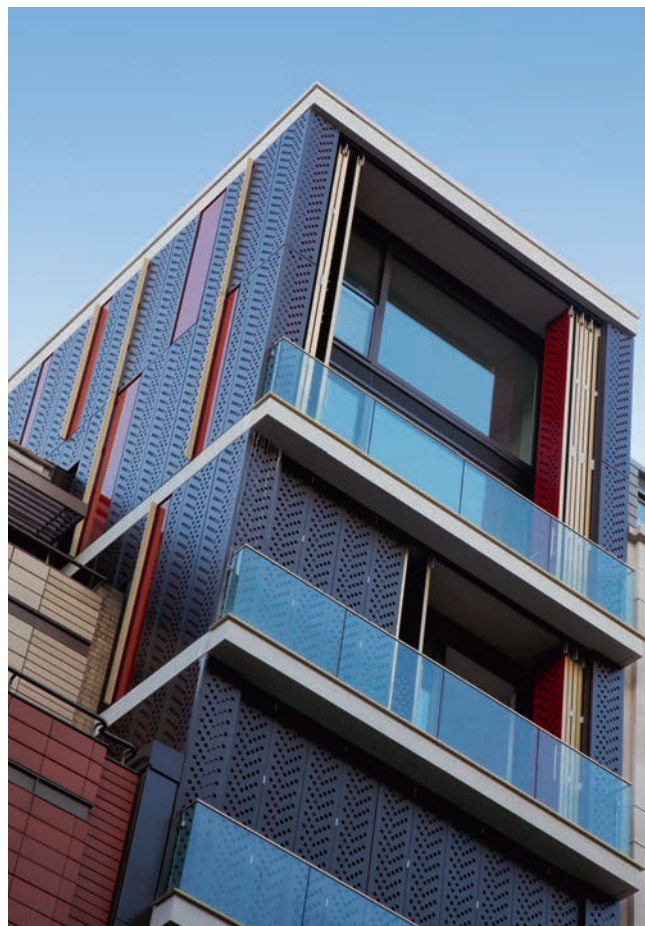
Most design features can be accommodated and Metalline's production team works closely to achieve designers requirements.



“ For architects and designers looking for an iconic finish to the exterior façade of their building ”

High class finishes include Anolok anodising in a choice of colours including Natural Silver, Bronzes from light to dark, Regency Gold 1 & 2, Black and specialist Anolok II Blue-Grey and Stone-Grey finishes.

Also available in polyester powder coating to most RAL and metallic colours.



# CILLS, FINS & GENERAL PRESSINGS

Metalline has been producing a wide range of architectural aluminium pressings for over 25 years and has extensive experience in producing bespoke products to your exact specification.

Cills, fins & pressings are integral to every building's fascia and the intricate detail and design requirements are often overlooked. At Metalline we have a back catalogue of extensive designs and drawings to help specifiers and designers achieve the finish they require. Besides the obvious aesthetic appeal, product items such as window pods, cruciforms, window fins and cills also offer extensive solar shading advantages. Internal parts of the building can also benefit from our wide range of fabricated panels and pressings to enhance areas such as stairwells and escalators.

All products are available in either an anodised or polyester powder coated finish.

“We have a back catalogue of extensive designs and drawings to help specifiers and designers achieve the finish they require.”



# COLUMN COVERS & BULLNOSES

Column covers are used to improve the visual aspect of structural columns in buildings and are aesthetic features in their own right.

Metalline is able to manufacture aluminium column covers to your specifications with a variety of finishes and colour options.

Bullnoses can create a strong aesthetic impact, adding shape, depth and height to the visual aspect of any building.

Bullnoses manufactured by Metalline have been used as features on many prestigious projects.



“Bullnoses can create a strong aesthetic impact, adding shape, depth and height to the visual aspect of any building.”



# SECRET FIX

---

## COPINGS

Metalline has produced a wide variety of copings that provide protection from the elements for a building's structure and are an attractive and weatherproof option for parapets and perimeter walls.

Copings generally feature a hidden fixing system that provides a secure mounting of the pressings without affecting the visual line. Metalline's secret fix coping is available in a standard mill finish, full anodised Anolok range or polyester powder coated to most RAL and metallic colours.

“ Copings generally feature a hidden fixing system that provides a secure mounting of the pressings without affecting the visual line ”

## BRACKETRY

---

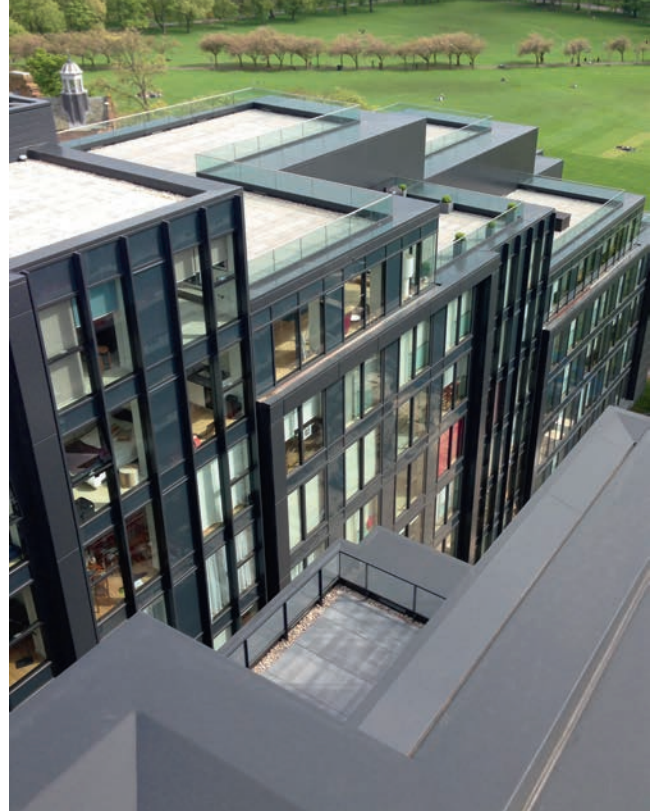
Metalline manufactures and supplies a broad range of bracketry and support systems for large curtain walling and insulated panel projects. Whatever the intricacy of the engineered drawing supplied, our expert TIG and MIG trained professional welding team can produce the finished product to your exact specification.

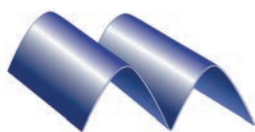
### Finished items include:

Curtain walling base plate bracketry  
Steel angle and top hat bracketry including gussets

Steel bracketry can be supplied in a pre-galvanised, red oxide painted, fully galvanised and a polyester powder coated finish.

“ Our expert TIG and MIG trained professional welding team can produce the finished product to your exact specification ”





**METALLINE**  
ARCHITECTURAL FABRICATIONS

Hollies Park Road - Cannock - Staffordshire - WS11 1DB

Tel: (01543) 456 930

Email: [sales@metalline.co.uk](mailto:sales@metalline.co.uk) [www.metalline.co.uk](http://www.metalline.co.uk)